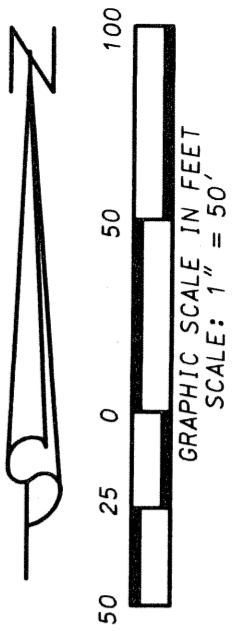
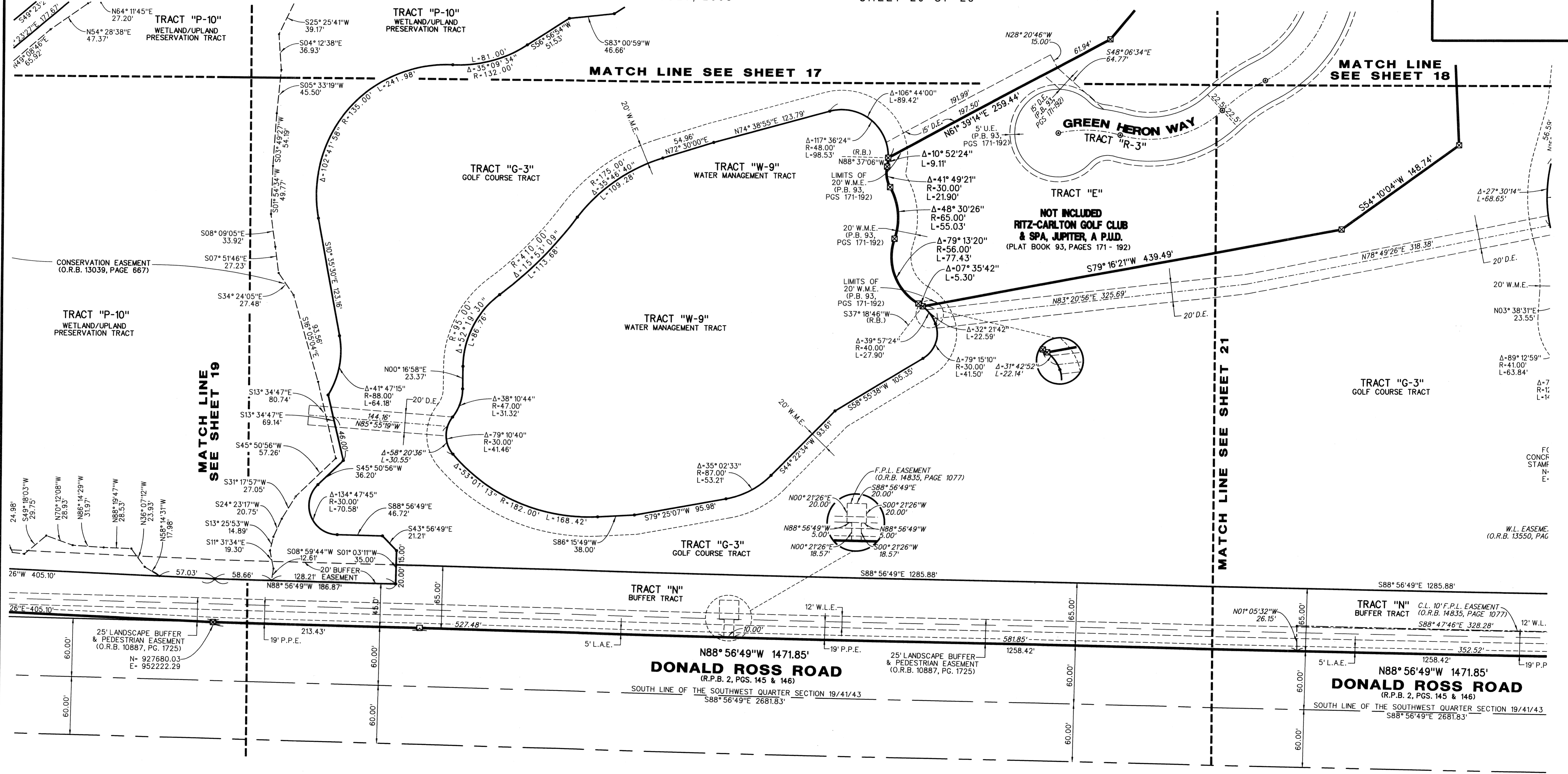
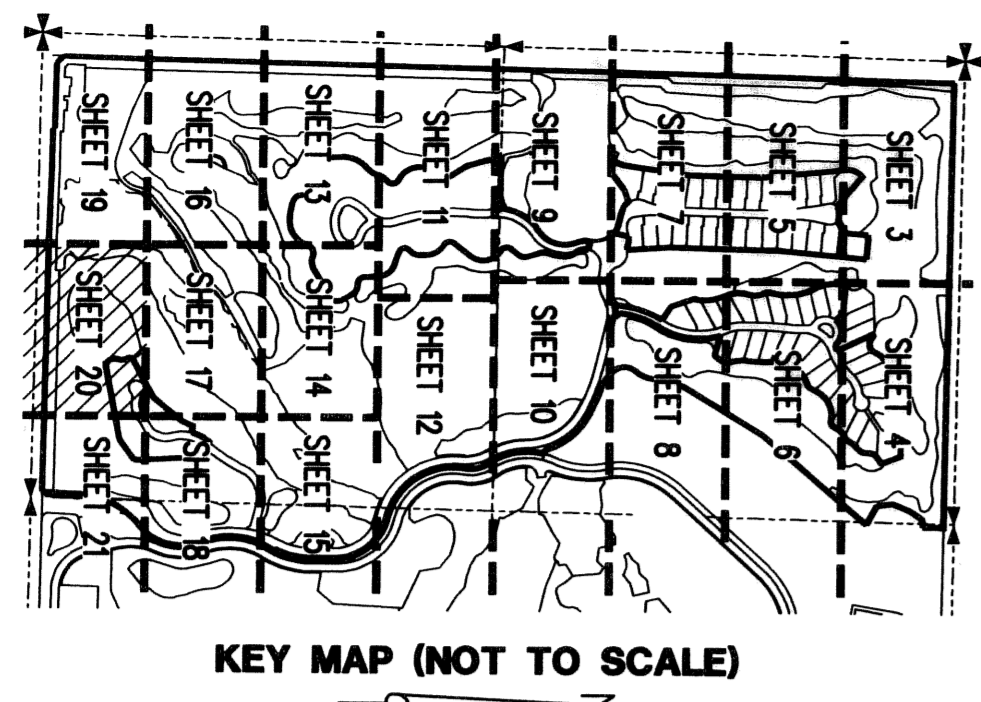


RITZ-CARLTON GOLF CLUB & SPA REPLAT, JUPITER, A P.U.D.

BEING A REPLAT OF RITZ-CARLTON GOLF CLUB & SPA, JUPITER, A P.U.D.,
 AS RECORDED IN PLAT BOOK 93, PAGES 171 THROUGH 192,
 LESS AND EXCEPT TRACTS "A", "A1", "C", "E", "M", "R-3", "R-4" AND R-6;
 LOTS 1C THROUGH 11C, INCLUSIVE; LOTS 15C THROUGH 34C, INCLUSIVE,
 OF SAID RITZ-CARLTON GOLF CLUB & SPA, JUPITER, A P.U.D.,
 AND LESS AND EXCEPT ALL OF RITZ-CARLTON GOLF CLUB & SPA, POD B, JUPITER, A P.U.D.,
 AS RECORDED IN PLAT BOOK 99, PAGES 42 THROUGH 44,
 ALL IN THE PUBLIC RECORDS OF PALM BEACH COUNTY FLORIDA,
 LYING IN SECTION 19, TOWNSHIP 41 SOUTH, RANGE 43 EAST,
 TOWN OF JUPITER, PALM BEACH COUNTY, FLORIDA
 JULY, 2005 SHEET 20 OF 23



116



LIDBERG LAND SURVEYING, INC.
 675 West Indiantown Road, Suite 200, Jupiter, Florida 33458 TEL. 561-746-9454

CAD: K:\UST\194143\RITZ\0033306\SHEET20.DGN	FB: PG.	JOB: 03-003-306
REF: K:\UST\194143\RITZ\0033306\0033306.DGN	OFF: R.J.W.	DATE: 09/18/03
FLD: -	CKD: D.C.L.	DWG: D03-003P
	SHEET 20 OF 23	